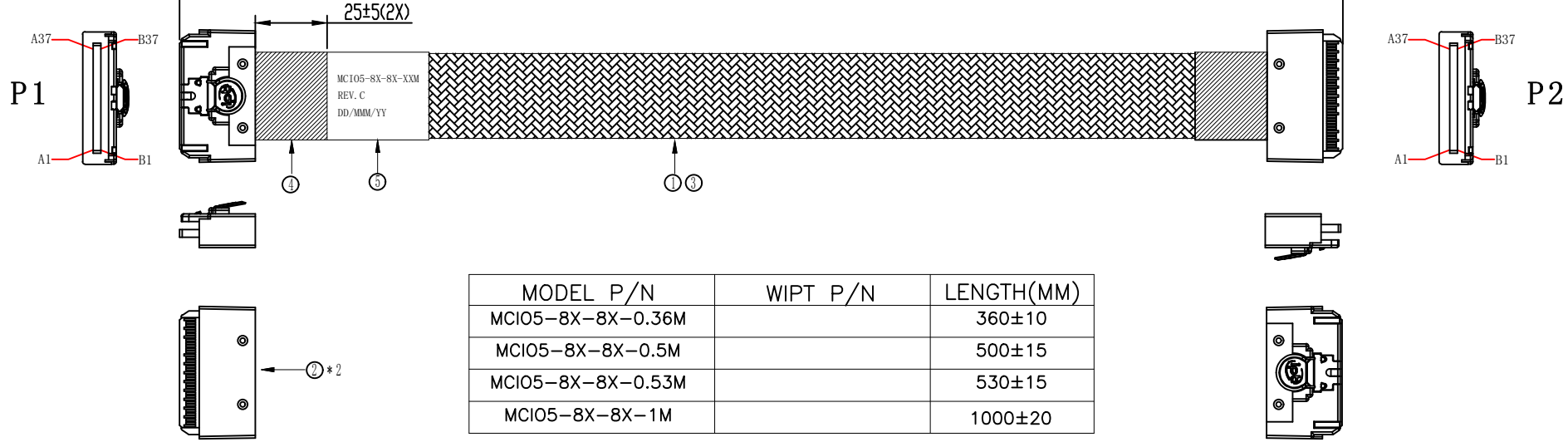


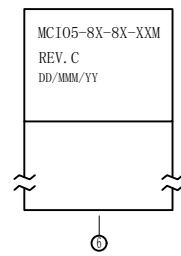
DATE	DESCRIPTION OF CHANGE	REV
2021-08-23	XXXXXX	A
2021-09-08	New length of part number	B
2021-09-10	Changing cable BOM , signal cable for control cable	C

LENGTH(MM)



MODEL P/N	WIPT P/N	LENGTH(MM)
MCI05-8X-8X-0.36M		360±10
MCI05-8X-8X-0.5M		500±15
MCI05-8X-8X-0.53M		530±15
MCI05-8X-8X-1M		1000±20

LABEL INFORMATION



- TEST CONDITIONS:
- 100% OPEN & SHORT & MISS-WIRING&INTERMITTENCE TEST.
 - CONDUCTIVE RESISTANCE: 3Ω MAX .
 - INSULATION RESISTANCE: 10 MΩ .
 - HI-POT TEST: 300VDC FOR 10ms.
 - THIS PRODUCT MEETS **PCIE 5.0**



TITLE	Cable, x8 SFF-TA-1016 to x8 SFF-TA-1016, PCIe G5				SHEET	1/2
CUSTOMER		CUSTOMER P/N	MCI05-8X-8X-XXM	DRAWING	<i>Yangheng</i>	
DWG NO.	WIPT20210823001	UNIT	SCALE	REV	VIEW	CHECKED
IPT P/N		mm	NONE	B		APPROVAL

lupeng

NO.	NAME	IPT NO.	DESCRIPTION	Q'TY	UNIT
⑤	LABEL		WHITE LABEL,L W=40*40	-	MM
④	ACETATE TAPE		W=25MM ACETATE TAPE,BLACK	-	MM
③	SLEEVING		EXPANDO TUBE: OD=12MM, PINK, VW-1,	-	MM
②	CONNECTOR		SFF-1016, 74P, STRAIGHT, X8, NO SIDE FLANGE,	2	PCS
①	CABLE		SAS CABLE: (30AWG*2C+2D)+HM, 85 Ω	-	MM

1 2 3 4 5 6 7 8

A A

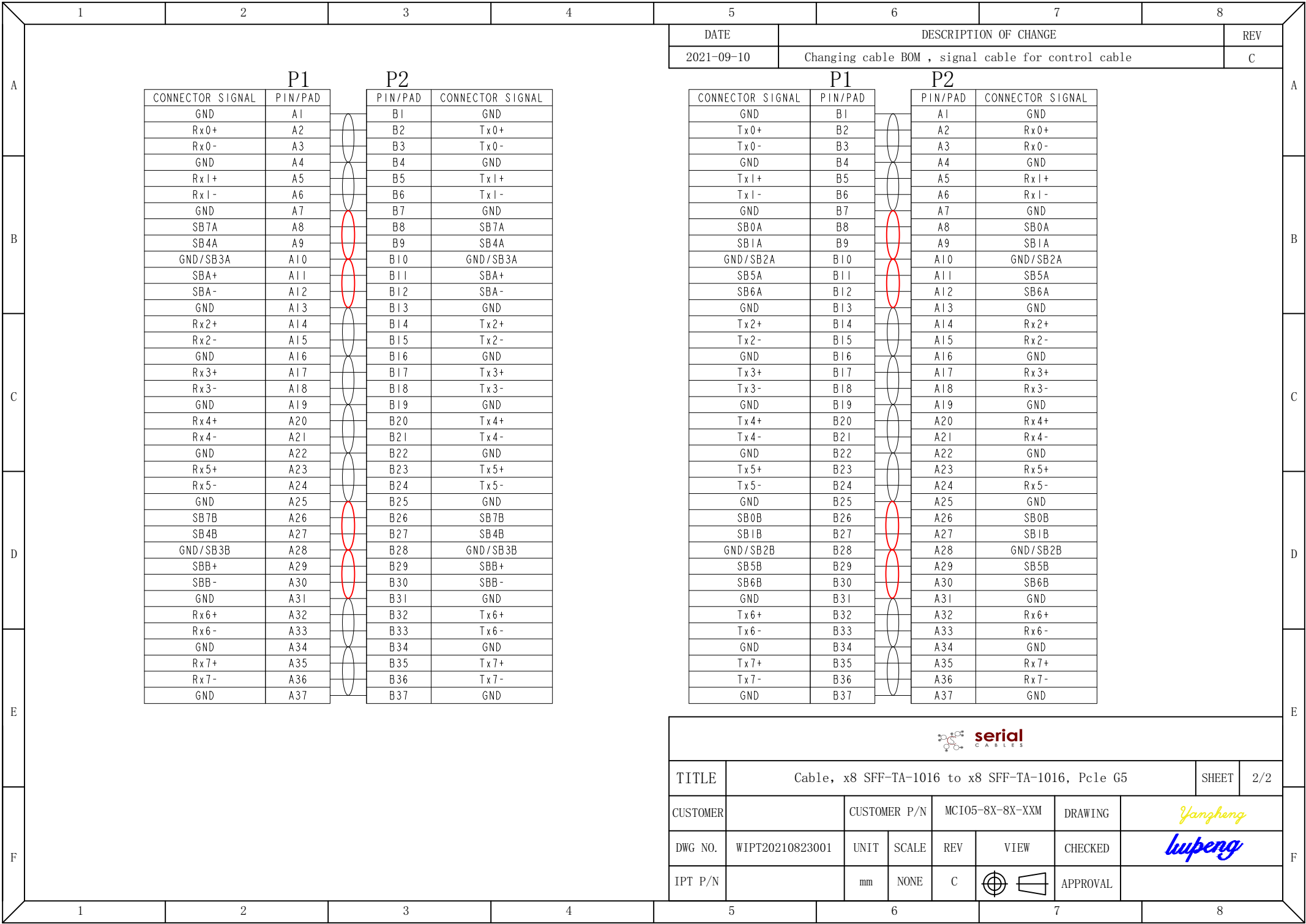
B B

C C

D D

E E

F F



DATE	DESCRIPTION OF CHANGE	REV
2021-09-10	Changing cable BOM , signal cable for control cable	C

P1		P2	
CONNECTOR SIGNAL	PIN/PAD	PIN/PAD	CONNECTOR SIGNAL
GND	A1	B1	GND
Rx0+	A2	B2	Tx0+
Rx0-	A3	B3	Tx0-
GND	A4	B4	GND
Rx1+	A5	B5	Tx1+
Rx1-	A6	B6	Tx1-
GND	A7	B7	GND
SB7A	A8	B8	SB7A
SB4A	A9	B9	SB4A
GND/SB3A	A10	B10	GND/SB3A
SBA+	A11	B11	SBA+
SBA-	A12	B12	SBA-
GND	A13	B13	GND
Rx2+	A14	B14	Tx2+
Rx2-	A15	B15	Tx2-
GND	A16	B16	GND
Rx3+	A17	B17	Tx3+
Rx3-	A18	B18	Tx3-
GND	A19	B19	GND
Rx4+	A20	B20	Tx4+
Rx4-	A21	B21	Tx4-
GND	A22	B22	GND
Rx5+	A23	B23	Tx5+
Rx5-	A24	B24	Tx5-
GND	A25	B25	GND
SB7B	A26	B26	SB7B
SB4B	A27	B27	SB4B
GND/SB3B	A28	B28	GND/SB3B
SBB+	A29	B29	SBB+
SBB-	A30	B30	SBB-
GND	A31	B31	GND
Rx6+	A32	B32	Tx6+
Rx6-	A33	B33	Tx6-
GND	A34	B34	GND
Rx7+	A35	B35	Tx7+
Rx7-	A36	B36	Tx7-
GND	A37	B37	GND

P1		P2	
CONNECTOR SIGNAL	PIN/PAD	PIN/PAD	CONNECTOR SIGNAL
GND	B1	A1	GND
Tx0+	B2	A2	Rx0+
Tx0-	B3	A3	Rx0-
GND	B4	A4	GND
Tx1+	B5	A5	Rx1+
Tx1-	B6	A6	Rx1-
GND	B7	A7	GND
SB0A	B8	A8	SB0A
SB1A	B9	A9	SB1A
GND/SB2A	B10	A10	GND/SB2A
SB5A	B11	A11	SB5A
SB6A	B12	A12	SB6A
GND	B13	A13	GND
Tx2+	B14	A14	Rx2+
Tx2-	B15	A15	Rx2-
GND	B16	A16	GND
Tx3+	B17	A17	Rx3+
Tx3-	B18	A18	Rx3-
GND	B19	A19	GND
Tx4+	B20	A20	Rx4+
Tx4-	B21	A21	Rx4-
GND	B22	A22	GND
Tx5+	B23	A23	Rx5+
Tx5-	B24	A24	Rx5-
GND	B25	A25	GND
SB0B	B26	A26	SB0B
SB1B	B27	A27	SB1B
GND/SB2B	B28	A28	GND/SB2B
SB5B	B29	A29	SB5B
SB6B	B30	A30	SB6B
GND	B31	A31	GND
Tx6+	B32	A32	Rx6+
Tx6-	B33	A33	Rx6-
GND	B34	A34	GND
Tx7+	B35	A35	Rx7+
Tx7-	B36	A36	Rx7-
GND	B37	A37	GND



TITLE	Cable, x8 SFF-TA-1016 to x8 SFF-TA-1016, PCIe G5				SHEET	2/2
CUSTOMER		CUSTOMER P/N	MCI05-8X-8X-XXM	DRAWING	<i>Yangheng</i>	
DWG NO.	WIPT20210823001	UNIT	SCALE	REV	VIEW	CHECKED
IPT P/N		mm	NONE	C		APPROVAL
						<i>lupeng</i>