

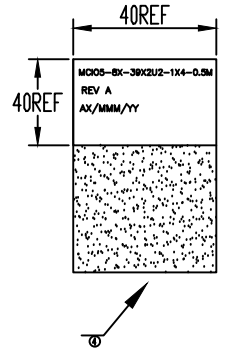
DATE	DESCRIPTION OF CHANGE	REV
2021-09-10	*****	A

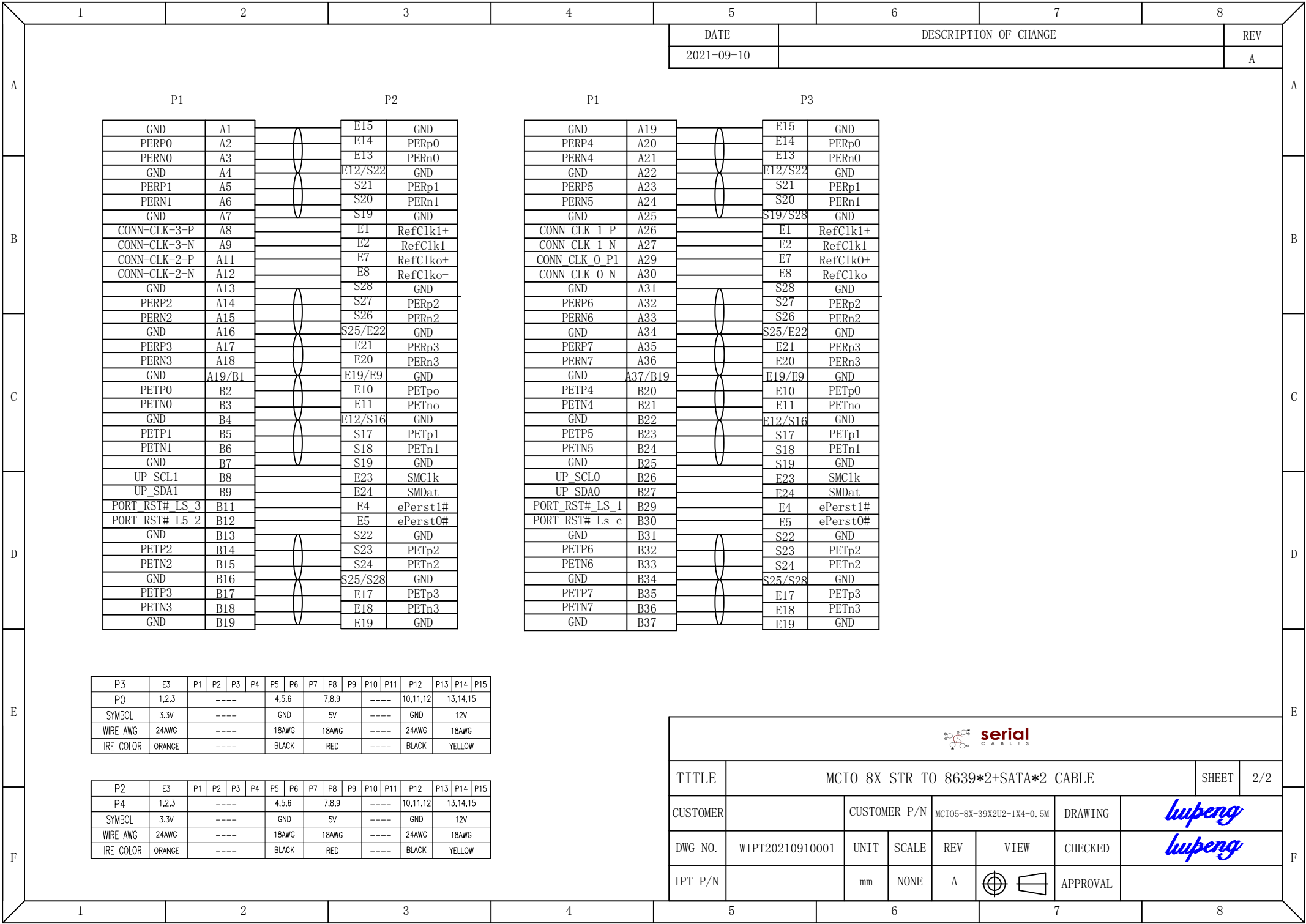
TEST CONDITIONS:  
 1.100% OPEN & SHORT & MISS-WIRING & INTERMITTENCE TEST  
 2.CONDUCTIVE RESISTANCE: 3Ω MAX  
 3.INSULATION RESISTANCE: 10 MΩ  
 4.HI-POT TEST: 300VDC FOR 10ms.  
 5.THIS PRODUCT MEETS PCIE5.0.



⑫	CABEL	CABEL : 40*40MM	1	PCS	
⑪	CABEL	CABEL : 10*30MM	4	PCS	
⑩	WIRE	WIRE 1007 24AWG STRANDED	-	MM	
⑨	External Mould	PVC 45P BLACK	-	G	
⑧	Internal Mold	PE See through	-	G	
⑦	Connector	SATA15P M PRS LCP BLK	2	PCS	
⑥	WIRE	WIRE:UL1007 18AWG 4IC BLK/RED/YEL	-	MM	
⑤	Adhesive tape	IERMLENE CLOTH TAPE,T=0.11mm. BLK.	-	MM	
④	Network manager	EXPANDO TUBE: OD=7MM, BLACK, VW-1.	-	MM	
③	Connector	SFF-8639 PCIE 68POS CONN, STR, BLACK	2	SET	
②	Connector	SAS SFF-1016 8X STR With shrapnel	1	SET	
①	CABLE	SAS 30AWG*2C+2D+A+HM PLATED, 85ohm GEN5	-	MM	
NO.	NAME	IPT NO.	DESCRIPTION	Q'TY	Q'TY

TITLE	MCIO 8X STR TO 8639*2+SATA*2 CABLE				SHEET	1/2
CUSTOMER	CUSTOMER P/N	MC105-8X-39X2U2-1X4-0.5M	DRAWING	lupeng		
DWG NO.	WIPT20210910001	UNIT	SCALE	REV	VIEW	CHECKED
IPT P/N		mm	NONE	A	APPROVAL	lupeng





DATE	DESCRIPTION OF CHANGE	REV
2021-09-10		A

P1		P2	
GND	A1	E15	GND
PERP0	A2	E14	PERp0
PERN0	A3	E13	PERn0
GND	A4	E12/S22	GND
PERP1	A5	S21	PERp1
PERN1	A6	S20	PERn1
GND	A7	S19	GND
CONN-CLK-3-P	A8	E1	RefClk1+
CONN-CLK-3-N	A9	E2	RefClk1
CONN-CLK-2-P	A11	E7	RefClk0+
CONN-CLK-2-N	A12	E8	RefClk0-
GND	A13	S28	GND
PERP2	A14	S27	PERp2
PERN2	A15	S26	PERn2
GND	A16	S25/E22	GND
PERP3	A17	E21	PERp3
PERN3	A18	E20	PERn3
GND	A19/B1	E19/E9	GND
PETP0	B2	E10	PETpo
PETN0	B3	E11	PETno
GND	B4	E12/S16	GND
PETP1	B5	S17	PETp1
PETN1	B6	S18	PETn1
GND	B7	S19	GND
UP_SCL1	B8	E23	SMClk
UP_SDA1	B9	E24	SMDat
PORT_RST#_LS_3	B11	E4	ePerst1#
PORT_RST#_L5_2	B12	E5	ePerst0#
GND	B13	S22	GND
PETP2	B14	S23	PETp2
PETN2	B15	S24	PETn2
GND	B16	S25/S28	GND
PETP3	B17	E17	PETp3
PETN3	B18	E18	PETn3
GND	B19	E19	GND

P1		P3	
GND	A19	E15	GND
PERP4	A20	E14	PERp0
PERN4	A21	E13	PERn0
GND	A22	E12/S22	GND
PERP5	A23	S21	PERp1
PERN5	A24	S20	PERn1
GND	A25	S19/S28	GND
CONN_CLK_1_P	A26	E1	RefClk1+
CONN_CLK_1_N	A27	E2	RefClk1
CONN_CLK_0_P1	A29	E7	RefClk0+
CONN_CLK_0_N	A30	E8	RefClk0-
GND	A31	S28	GND
PERP6	A32	S27	PERp2
PERN6	A33	S26	PERn2
GND	A34	S25/E22	GND
PERP7	A35	E21	PERp3
PERN7	A36	E20	PERn3
GND	A37/B19	E19/E9	GND
PETP4	B20	E10	PETpo
PETN4	B21	E11	PETno
GND	B22	E12/S16	GND
PETP5	B23	S17	PETp1
PETN5	B24	S18	PETn1
GND	B25	S19	GND
UP_SCL0	B26	E23	SMClk
UP_SDA0	B27	E24	SMDat
PORT_RST#_LS_1	B29	E4	ePerst1#
PORT_RST#_Ls_c	B30	E5	ePerst0#
GND	B31	S22	GND
PETP6	B32	S23	PETp2
PETN6	B33	S24	PETn2
GND	B34	S25/S28	GND
PETP7	B35	E17	PETp3
PETN7	B36	E18	PETn3
GND	B37	E19	GND

P3	E3	P1	P2	P3	P4	P5	P6	P7	P8	P9	P10	P11	P12	P13	P14	P15
P0	1,2,3	----				4,5,6		7,8,9		----	10,11,12		13,14,15			
SYMBOL	3.3V	----				GND		5V		----	GND		12V			
WIRE AWG	24AWG	----				18AWG		18AWG		----	24AWG		18AWG			
WIRE COLOR	ORANGE	----				BLACK		RED		----	BLACK		YELLOW			

P2	E3	P1	P2	P3	P4	P5	P6	P7	P8	P9	P10	P11	P12	P13	P14	P15
P4	1,2,3	----				4,5,6		7,8,9		----	10,11,12		13,14,15			
SYMBOL	3.3V	----				GND		5V		----	GND		12V			
WIRE AWG	24AWG	----				18AWG		18AWG		----	24AWG		18AWG			
WIRE COLOR	ORANGE	----				BLACK		RED		----	BLACK		YELLOW			

TITLE	MCIO 8X STR TO 8639*2+SATA*2 CABLE					SHEET	2/2
CUSTOMER		CUSTOMER P/N	MC105-8X-39X2U2-1X4-0.5M	DRAWING	<i>lupeng</i>		
DWG NO.	WIPT20210910001	UNIT	SCALE	REV	VIEW	CHECKED	<i>lupeng</i>
IPT P/N		mm	NONE	A		APPROVAL	