

The marking on this product doesn't contain environmental hazardous materials per directive 2011/65/EU for RoHS compliance.

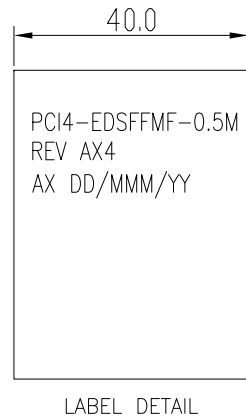
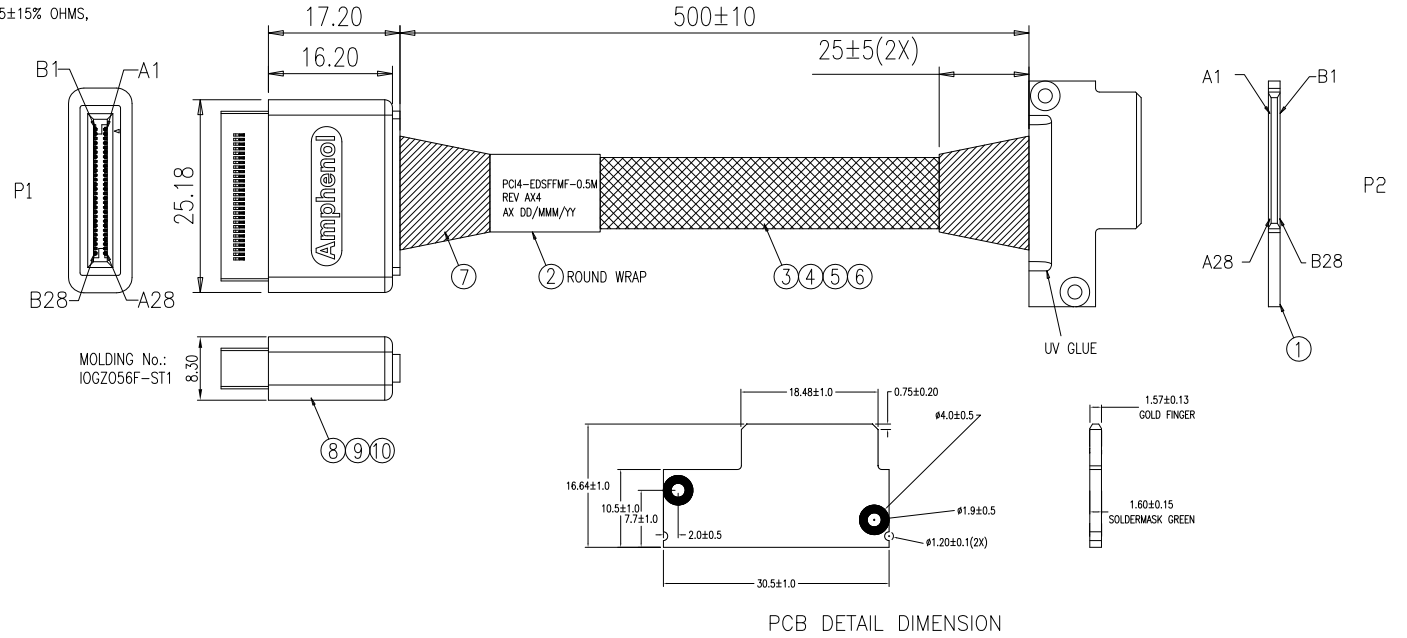
NOTE:

- THE CABLE ASSEMBLY SHOULD BE RoHS2.0 COMPLIANT.  
该产品通过RoHS2.0认证。
- ELECTRICAL PERFORMANCE SHOULD MEET THE POIE4.0 CABLE SPEC,  
电气特性遵循PCIE4.0规范。
- THE CABLE ASSEMBLY SHALL MEET BELOW IMPEDANCE REQUIREMENT: TERMINATION AREA: 85±15% OHMS,  
CABLE ABSOLUTE AREA: 85±10% OHMS.  
该产品满足下面阻抗特性: 接触区域85±15%欧姆, 线材为85±10%欧姆。

ECN NO.	REV.	DESCRIPTIONS	CHECKED	APPROVED	DATE
REL.	AX2	ADD COVER FOR P2	FISK	KASUN	02/19/2020
	AX3	ADD P2 TO PCB	FISK	KASUN	03/11/2020
	AX4	CHANGE WIRING TABLE	FISK	KASUN	05/03/2020

WIRE DIAGRAM

P1		P2	
GND	B28	GND	B28
PETp3	B27	PETp3	B27
PETn3	B26	PETn3	B26
GND	B25	GND	B25
PETp2	B24	PETp2	B24
PETn2	B23	PETn2	B23
GND	B22	GND	B22
PETp1	B21	PETp1	B21
PETn1	B20	PETn1	B20
GND	B19	GND	B19
PETp0	B18	PETp0	B18
PETn0	B17	PETn0	B17
GND	B16	GND	B16
REFCLKp0	B15	REFCLKp0	B15
REFCLKn0	B14	REFCLKn0	B14
GND	B13	GND	B13
PWRDIS	B12	PWRDIS	B12
3.3 VAux	B11	3.3 VAux	B11
PERSTO#	B10	PERSTO#	B10
DUALPORTEN#	B9	DUALPORTEN#	B9
RFU	B8	RFU	B8
MFG	B7	MFG	B7
12 V	B6	12 V	B6
12 V	B5	12 V	B5
12 V	B4	12 V	B4
12 V	B3	12 V	B3
12 V	B2	12 V	B2
12 V	B1	12 V	B1
GND	A28	GND	A28
PERp3	A27	PERp3	A27
PERn3	A26	PERn3	A26
GND	A25	GND	A25
PERp2	A24	PERp2	A24
PERn2	A23	PERn2	A23
GND	A22	GND	A22
PERp1	A21	PERp1	A21
PERn1	A20	PERn1	A20
GND	A19	GND	A19
PERp0	A18	PERp0	A18
PERn0	A17	PERn0	A17
GND	A16	GND	A16
REFCLKp1	A15	REFCLKp1	A15
REFCLKn1	A14	REFCLKn1	A14
GND	A13	GND	A13
PRNSTO#	A12	PRNSTO#	A12
PERST1#/CLKREQ#	A11	PERST1#/CLKREQ#	A11
LED#/ACTIVITY	A10	LED#/ACTIVITY	A10
SMBRST#	A9	SMBRST#	A9
SMBDAT	A8	SMBDAT	A8
SMBCLK	A7	SMBCLK	A7
GND	A6	GND	A6
GND	A5	GND	A5
GND	A4	GND	A4
GND	A3	GND	A3
GND	A2	GND	A2
GND	A1	GND	A1



10	HMRPE45NT1	PE:LOW DENSITY,CLEAR,HF	A/R
9	RMRPV45092	PVC:45P,V0,BLK,Cd300PPM,N6P	A/R
8	HEPCBA0371	SFF 1002 1C PCBA (HEPCB56003 + HCGZ56F001)	1
7	HMTPT00012	ACETATE TAPE:W=1INCH,HF	A/R
6	HMTB007001	EXPANDO TUB:7.0MM,BLK,SINGLE(OD7~25MM),R2,HF	A/R
5	H0330230CX	WIRE_30AWG,UL3302,1/0.254,0D0.55,FR-XLPE,VW-1,NO MARKING,HF	A/R
4	R1571028XX	WIRE_28AWG,UL1571,YEL&GEN,OD=0.8MM	A/R
3	RWSS300158	SAS CBL:30#2C+2D+HAM,85ohm,PP,BLU,VW-1,R2	A/R
2	HMLSB40501	LABEL:Synthetic Paper,40*50MM,WHT,BLANK,HF	1
1	HEPCB56017	PCB: GEN-Z 1C PADDEL CARD HF-FR4 L.30.5 W:15.15 T:1.57,85ohm,GRN,HF	1
ITEM	P/N	DESCRIPTION	QTY

This drawing is the property of Serial Cables and is delivered on the express condition that it is not to be disclosed, reproduced or used, in whole or in part, for manufacture or sale by anyone other than Serial Cables without its prior consent, and that no right is granted to disclose or use any information in this drawing.

DRAWN: JESSICA HUANG DATE: 05/03/2020

CHECKED: FISK ZENG DATE: 05/03/2020

APPROVED: KASUN LI DATE: 05/03/2020

TITLE: GenZ 1C FEMALE PLUG TO 1C STR PLUG CABLE ASSEMBLY

DWG. No.: RGZ56-0091

SCALE: NONE SHEET 1 OF 2

UNIT: MM REV.: AX4

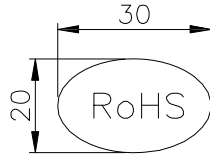
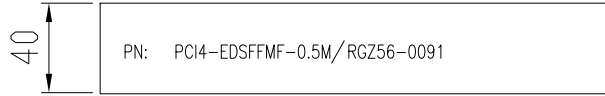
GENERAL TOLERANCES

.X:	± 1.50
.XX:	± 0.10
.XXX:	±
ANGULAR:	±

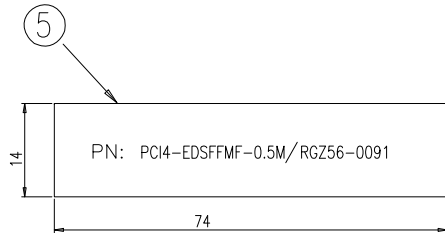
The marking on this product doesn't contain environmental hazardous materials per directive 2011/65/EU for RoHS compliance.

ECN NO.	REV.	DESCRIPTIONS	CHECKED	APPROVED	DATE
REL.	AX2	ADD COVER FOR P2	FISK	KASUN	02/19/2020
	AX3	ADD P2 TO PCB	FISK	KASUN	03/11/2020
	AX4	CHANGE WIRING TABLE	FISK	KASUN	05/03/2020

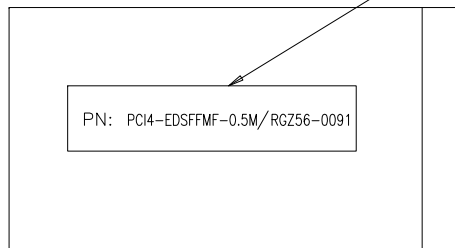
LABEL 2



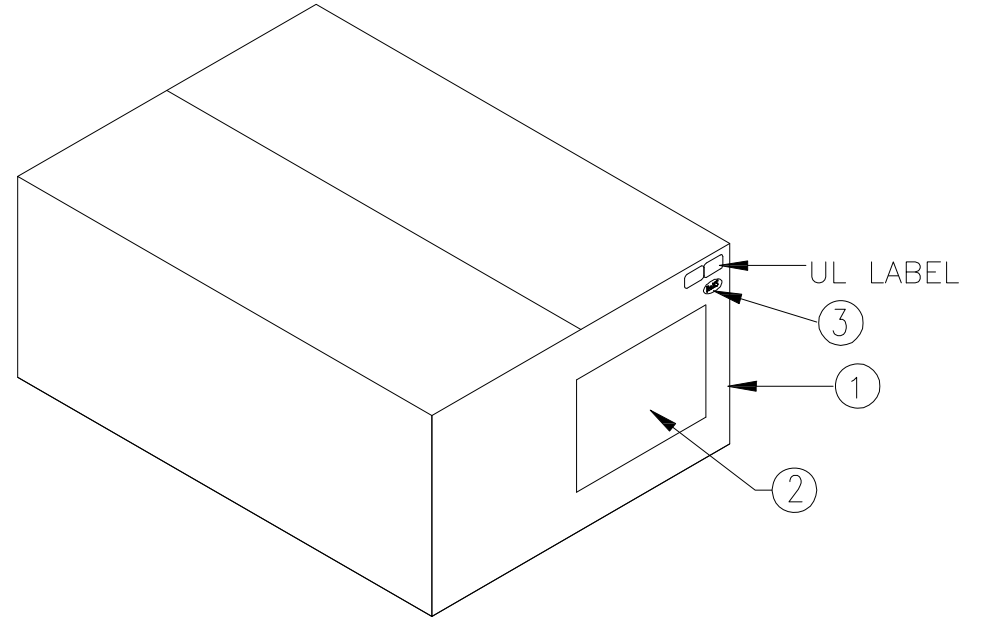
LABEL 3



⑤ The label is stucked in the middle.



④ 1PCS PRODUCTS PUT INTO THE PE BAG



5	HMSB14741	LABEL:Synthetic Paper,14*74MM,WHT,HF	1
4	RMBZIP0012	ZIP BAG:100*340MM,T=6C	1
3	RMLSW30201	RoHS LABEL:30*20MM, LABEL5 INFO	1
2	RMLSB00401	LABEL3:100*40MM,WHT,BLANK,R2	1
1	RMBCTN0019	CARTON:590*240*200MM E TYPE	1
ITEM	PART NUMBER	DESCRIPTION	Q'TY

This drawing is the property of Serial Cables and is delivered on the express condition that it is not to be disclosed, reproduced or used, in whole or in part, for manufacture or sale by anyone other than Serial Cables without its prior consent, and that no right is granted to disclose or use any information in this drawing.



GENERAL TOLERANCES

.X:	± 0.5
.XX:	± 0.3
.XXX:	± 0.01
ANGULAR:	± 1°

DRAWN:	JESSICA HUANG	DATE:	05/03/2020
CHECKED:	FISK ZENG	DATE:	05/03/2020
APPROVED:	KASUN LI	DATE:	05/03/2020

TITLE:		
Gen Z 1C FEMALE PLUG TO 1C STR PLUG CABLE ASSEMBLY		
DWG. No.: RGZ56-0091		
	SCALE: NONE	SHEET 2 OF 2
	UNIT: MM	SIZE: A4
REV.: AX4		