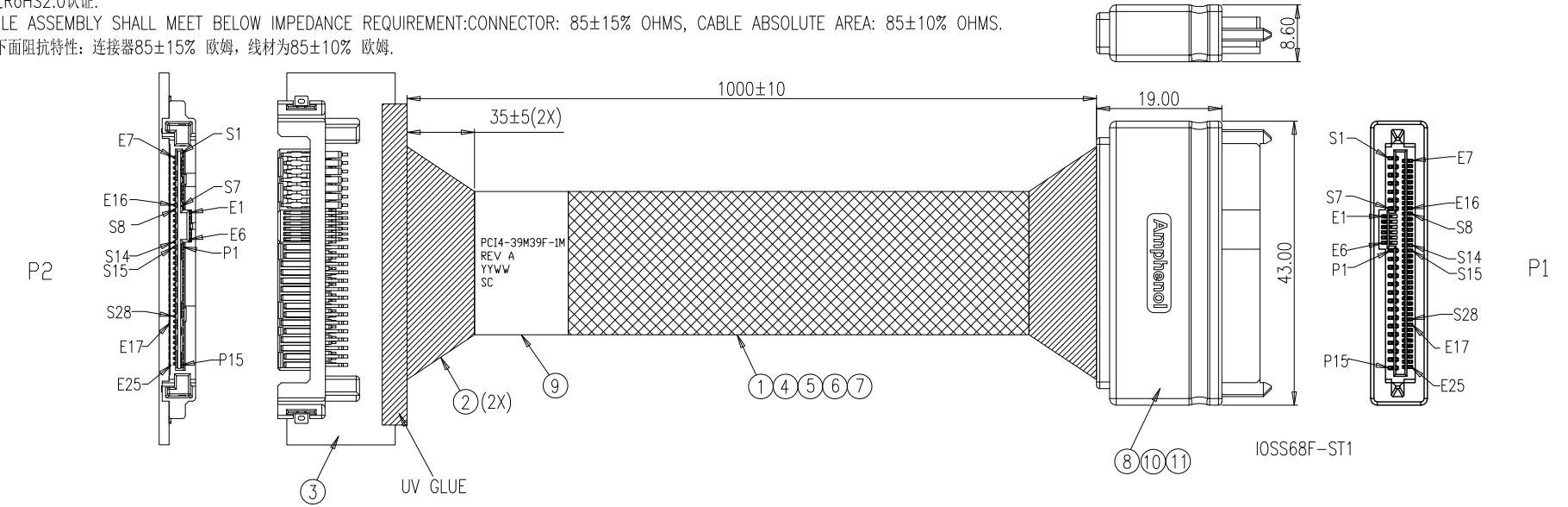


The marking on this product doesn't contain environmental hazardous materials per directive 2011/65/EU for RoHS compliance.

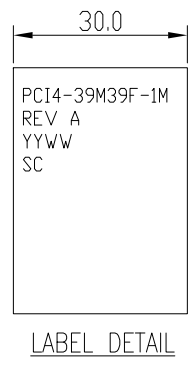
REVISIONS

ECN NO.	REV.	DESCRIPTIONS	CHECKED	APPROVED	DATE
REL.	AX1	INITIAL RELEASE	FSK	KASUN	05/14/2019
	AX2	UPDATE CUSTOMER PN	FSK	KASUN	05/22/2019

- NOTE:
- ELECTRICAL AND MECHANICAL PERFORMANCE SHALL MEET THE PCIE GEN4.0 INDUSTRIAL STANDARD.
电气和机械特性遵循PCIE GEN4.0工业标准.
 - THE CABLE ASSEMBLY SHALL BE MEET RoHS2.0 COMPLIANT.
该产品通过RoHS2.0认证.
 - THE CABLE ASSEMBLY SHALL MEET BELOW IMPEDANCE REQUIREMENT:CONNECTOR: 85±15% OHMS, CABLE ABSOLUTE AREA: 85±10% OHMS.
该产品满足下面阻抗特性: 连接器85±15% 欧姆, 线材为85±10% 欧姆.



11	RMRPB20002	RESIN:PBT,120R,V0,BLK,High flowability,R2	A/R
10	HMRPE45NT1	PE:LOW DENSITY,CLEAR,HF	A/R
9	HMLS30701	LABEL:30*70MM,WHT	1
8	HEPCBA0372	PCBA:HEPCB68045+HCPE68F014 85 OHM	1
7	R1007024XX	WIRE,24AWG,UL1007,STRAND ED	A/R
6	HMTBD01001	EXPANDO TUBE:OD=10MM,BLACK,VW-1,HF	A/R
5	H03302300X	WIRE,30AWG,UL3302, 7/0.10,OD0.55,FR-XLPE,VW-1,NO MARKING,HF	A/R
4	R10070180X	WIRE:18AWG,41C,UL1007,BLK/RED/YEL	A/R
3	AST8639-000X	SFF-8639 68P F WITH PCBA 85 OHM	1
2	HMMTP00036	ACETOUS Tape:30mm WIDE,30M/REEL,BLK	A/R
1	HWSS300147	SAS CBL:NO UL,#30#2C+HA+2D+AM,Silvered,FEP,85ohm,BLU,VW-1,40G,HF	A/R
ITEM	P/N	DESCRIPTION	QTY



GENERAL TOLERANCES	
.X:	± 0.5
.XX:	± 0.3
.XXX:	±
ANGULAR:	±

This drawing is the property of Serial Cables and is delivered on the express condition that it is not to be disclosed, reproduced or used, in whole or in part, for manufacture or sale by anyone other than Serial Cables without its prior consent, and that no right is granted to disclose or use any information in this drawing.



DRAWN:	NIALL ZHANG	DATE:	05/22/2019
CHECKED:	FSK ZENG	DATE:	05/22/2019
APPROVED:	KASUN LI	DATE:	05/22/2019

TITLE:

SC P/N: PC14-39M39F-1M
NDS1081 LED AND SWITCH CABLE ASSY

DWG. No.: RPC68-0097

SCALE: NONE

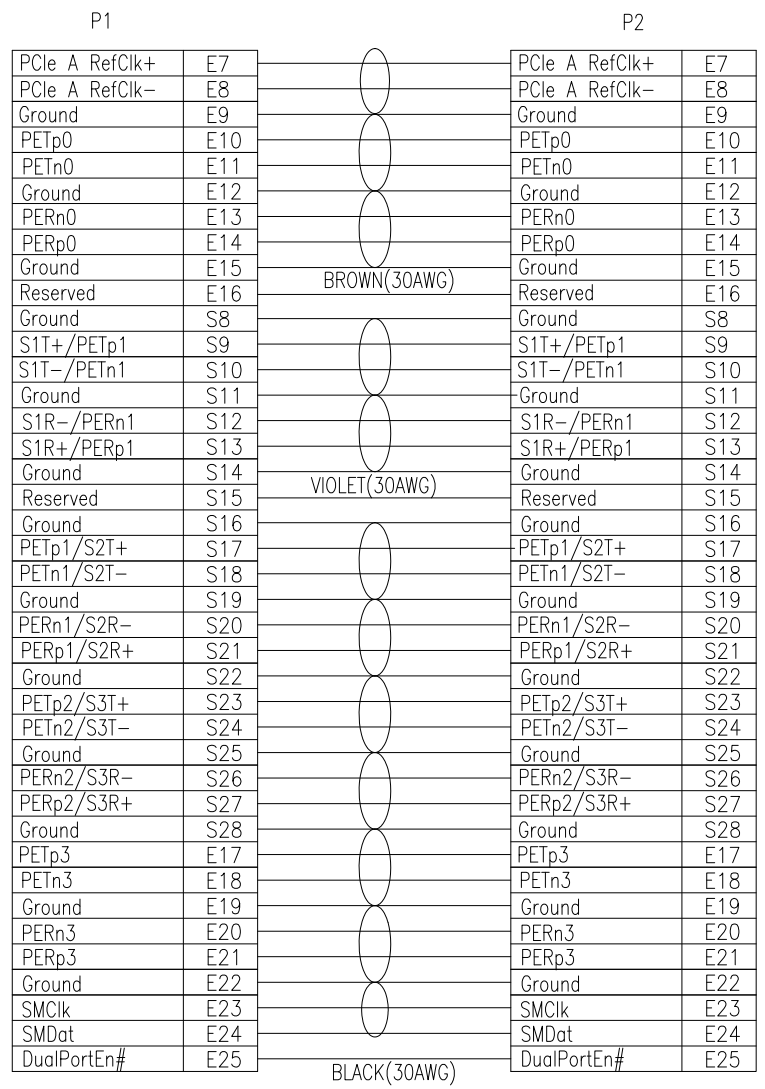
SHEET 1 OF 3

UNIT: MM SIZE: A4 REV: AX2

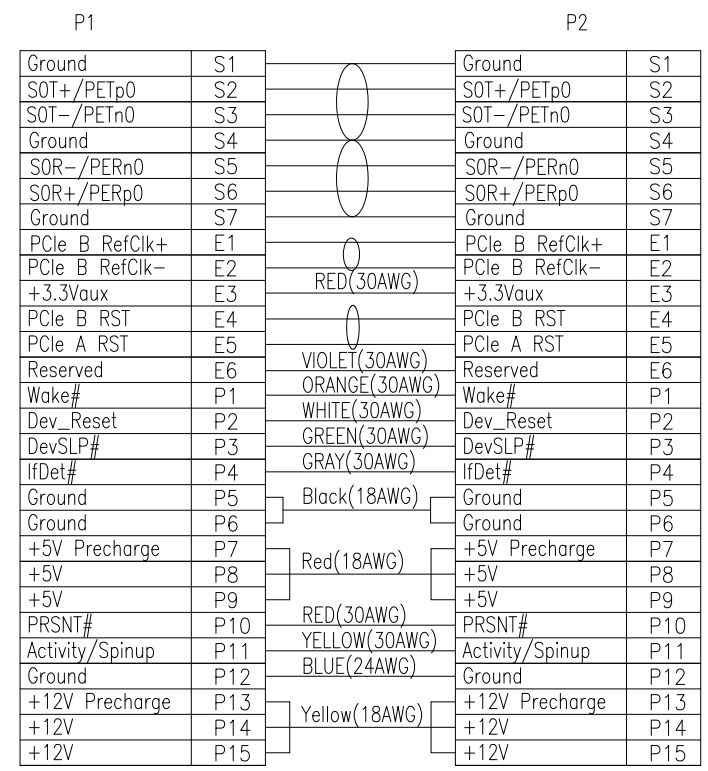
The marking on this product doesn't contain environmental hazardous materials per directive 2011/65/EU for RoHS compliance.

REVISIONS

ECN NO.	REV.	DESCRIPTIONS	CHECKED	APPROVED	DATE
REL.	AX1	INITIAL RELEASE	FIKSK	KASUN	05/14/2019
	AX2	UPDATE CUSTOMER PN	FIKSK	KASUN	05/22/2019



WIRING DIAGRAM



GENERAL TOLERANCES	
.X:	± 0.5
.XX:	± 0.3
.XXX:	±
ANGULAR:	±

DRAWN:	DATE:
NIALL ZHANG	05/22/2019
CHECKED:	DATE:
FIKSK ZENG	05/22/2019
APPROVED:	DATE:
KASUN LI	05/22/2019

This drawing is the property of Serial Cables and is delivered on the express condition that it is not to be disclosed, reproduced or used, in whole or in part, for manufacture or sale by anyone other than Serial Cables without its prior consent, and that no right is granted to disclose or use any information in this drawing.



TITLE:		
SC P/N: PCI4-39M39F-1M NDS1081 LED AND SWITCH CABLE ASSY		
DWG. No.: RPC68-0097		
	SCALE: NONE	SHEET 2 OF 3
	UNIT: MM	SIZE: A4
	REV: AX2	

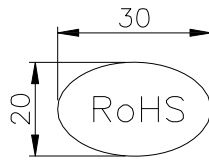
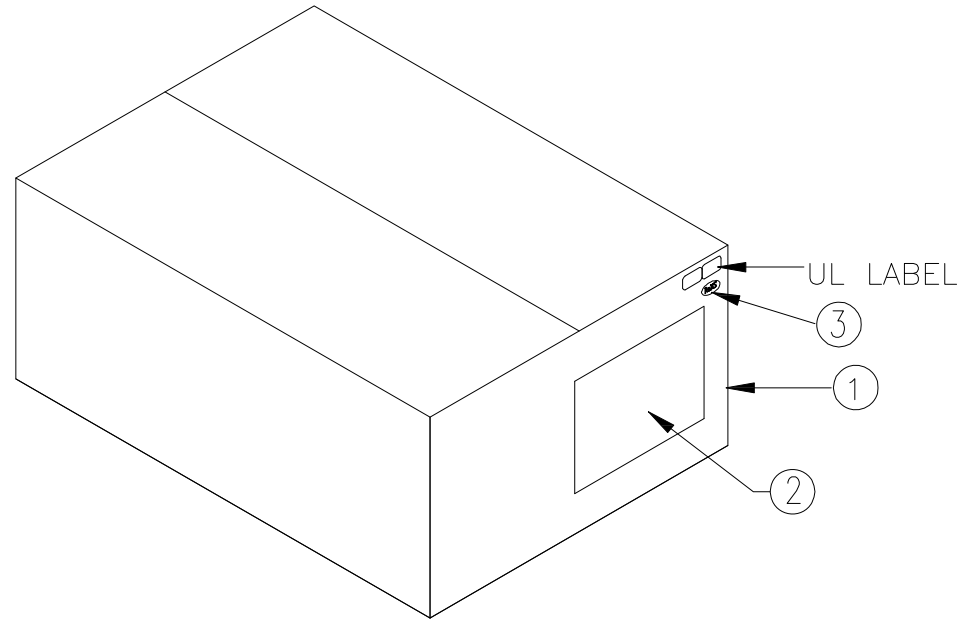
The marking on this product doesn't contain environmental hazardous materials per directive 2011/65/EU for RoHS compliance.

REVISIONS

ECN NO.	REV.	DESCRIPTIONS	CHECKED	APPROVED	DATE
REL.	AX1	INITIAL RELEASE	FIK	KASUN	05/14/2019
	AX2	UPDATE CUSTOMER PN	FIK	KASUN	05/22/2019

LABEL 2

PN: PCI4-39M39F-1M/ RPC68-0097



LABEL 3

3	RMLSW30201	LABEL:30*20,GRN,WITH ROHS LOGO	A/R
2	HMLSB00401	LABEL:SyntheticPaper,100*40MM,WHT,BLANK,HF	A/R
1	RMBCTN0019	CARTON:590*240*200MM E TYPE	A/R
ITEM	PART NUMBER	DESCRIPTION	Q'TY

This drawing is the property of Serial Cables and is delivered on the express condition that it is not to be disclosed, reproduced or used, in whole or in part, for manufacture or sale by anyone other than Serial Cables without its prior consent, and that no right is granted to disclose or use any information in this drawing.

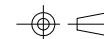


TITLE:
SC P/N: PCI4-39M39F-1M
SFF-8639 FEMALE TO SFF-8639 MALE CABLE ASSEMBLY

DWG. No.: RPC68-0097

GENERAL TOLERANCES

.X:	± 0.5	DRAWN:	NIALL ZHANG	DATE:	05/22/2019
.XX:	± 0.3	CHECKED:	FIK ZENG	DATE:	05/22/2019
.XXX:	±	APPROVED:	KASUN LI	DATE:	05/22/2019
ANGULAR:	±				



SCALE: NONE

SHEET 3 OF 3

UNIT: MM

SIZE: A4

REV.: AX2