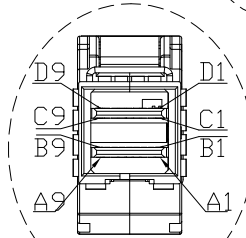
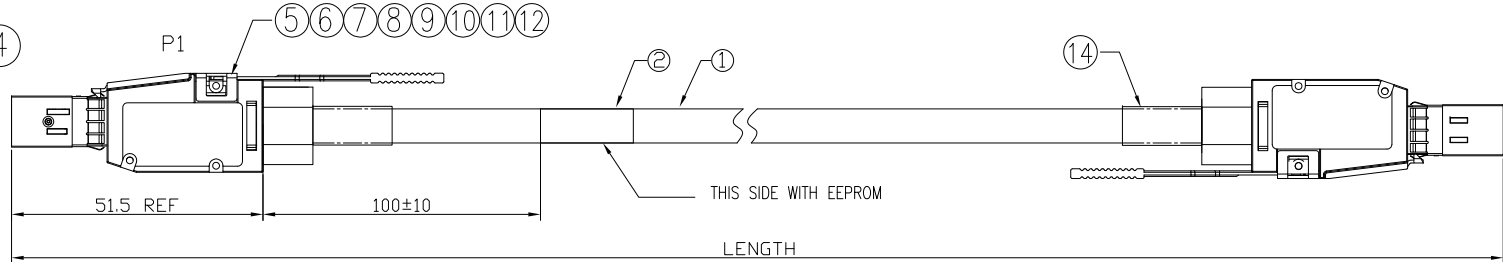
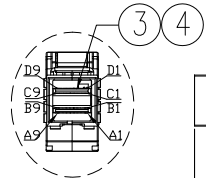
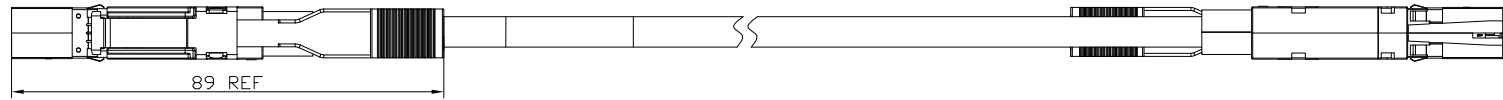
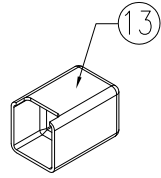


PROPRIETARY INFORMATION
COMPANY CONFIDENTIAL

REV.	ECN. NO.	DESCRIPTION	ENG	DATE
X1		INITIAL	JACKYET	08/08/2018

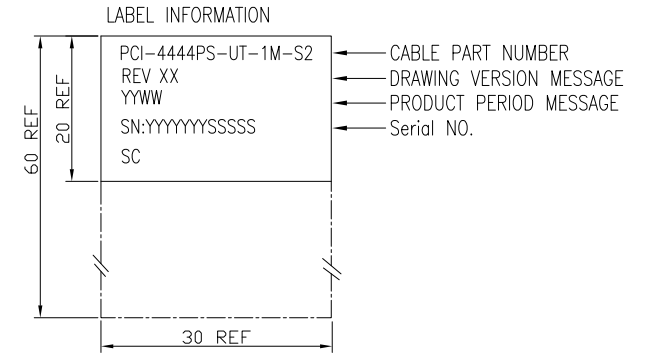


VIEW A

LENGTH TABLE

PART NUMBER	LENGTH	WIRE GAUGE
PCI-4444PS-UT-1M-S2	1000±30	28AWG


VIEW A 2:1



RoHS Compliant

14	O-HT-S-XXXX	AR	HOT SHRINT TUBE, Ø8.0 WITH GLUE, BLACK
13	P-HSEPE-0001	2	DUST CAP FOR SFF-8644, PE, NATURAL
12	P-HSEST-0002	2	CABLE SR FOR SFF-8644, OM638 LOW PRESSURE
11	M-HSESLOT-02	2	LATCH FOR SFF-8644, S304
10	M-HSESLOT-01	2	EMI SHRAPNEL FOR SFF-8644, S301
9	P-HSENY-0001	2	PULL_TAB FOR SFF-8644, NY66, BLUE
8	M-HSEALOT-01	6	RIVET NUT FOR SFF-8644,
7	P-HSEST-0001	2	INNER MOLDING FOR SFF-8644, 6208
6	M-HSEZANI-04-A	2	TOP SHELL FOR EXT HD4X, ZINC ALLOY,
5	M-HSEZANI-03-A	2	BACK SHELL FOR EXT HD4X, ZINC ALLOY,
4	P-HSE2830-030-1	2	PCB FOR EXTERNAL SAS HD4X, C1~D9, AU 30u",
3	P-HSE2830-02B	2	PCB FOR EXTERNAL SAS HD4X, A1~B9, AU 30u",
2	L-01-S-0004	1	ID LABEL, 60*30MM, WRAPPING AROUND, BLANK
1	CAB-QS1-LT-28PC	R/A	EXTERNAL CABLE, 8P*28AWG, 100 ohm, LTK, PVC

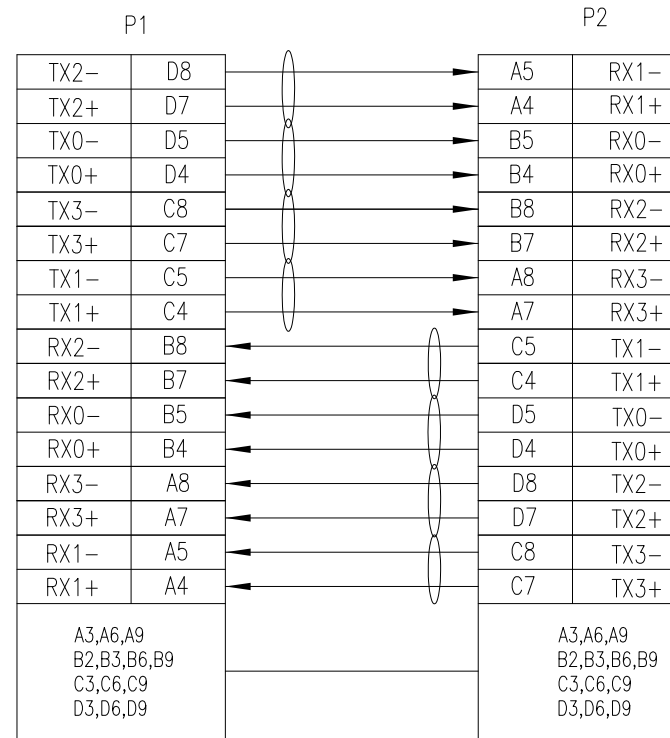
ITEM	NAME	Q'TY	DESCRIPTION	NOTE
------	------	------	-------------	------

GENERAL TOLERANCE X.± 0.50 .X± 0.20 .XX± 0.10 .XXX± 0.05	ANGLE TOLERANCE X°± 5.0° .X°± 3.0° .XX°± 2.0° .XXX°± 1.0°	DRAWN JACKYET	DATE 2018.08.08	 TITLE: EXTERNAL SAS HD4x CABLE ASSEMBLY SFF-8644, PCIe Gen3
MATL SEE BOM	FINISH SEE NOTES	CHECKED	DATE	
SCALE N/A	UNIT mm	APPROVED	DATE	DRAWING NO. PCI-4444PS-UT-1M-S2
SHEET 1 OF 2				SIZE A4 REV. X1

PROPRIETARY INFORMATION
COMPANY CONFIDENTIAL

REV.	ECN. NO.	DESCRIPTION	ENG	DATE
--		SEE SHEET 1	--	--

WIRING TABLE HIGH SPEED SIGNAL LANES



MATERIAL RoHS COMPLIANT:

1. CABLE(9 PAIRS, 100 OHMS) :
 CONDUCTOR: 28AWG SILVER PLATED COPPER
 6 WIRES: 32AWG TINNED COPPER
 INSULATION: Skin-Foan-Skin
 DRAIN WIRE: TINNED COPPER
 PAIR SHIELD: HOT MELT ALUMINUM MYLAR
2. PCB: ISOLA 370HR
3. LEFT /RIGHT SHELL: ZINC ALLOY NICKEL PLATED
4. THIS PRODUCT CONFORMS TO THE MECHANICAL DIMENSIONING REQUIREMENTS OF SFF-8644
5. TWO-WIRED SERIAL MEMORY: FT24C02A EEPROM(256 BYTES)
6. THIS PRODUCT MEETS PCIE EXTERNAL CABLING REV 3.0 V6
7. STRUCTURE DIMENSION ACCORDING TO SFF-8644.
8. CABLE LENGTH PLEASE ACCORDING TO LENGTH TABLE IN PAGE ONE.

RoHS Compliant

GENERAL TOLERANCE X.± 0.50 .X± 0.20 .XX± 0.10 .XXX± 0.05	ANGLE TOLERANCE X°± 5.0° .X°± 3.0° .XX°± 2.0° .XXX°± 1.0°	DRAWN JACKYET	DATE 2018.08.08	 TITLE: EXTERNAL SAS HD4x CABLE ASSEMBLY SFF-8644, PCIe Gen3
MATL SEE BOM		CHECKED	DATE	
FINISH SEE NOTES		APPROVED	DATE	DRAWING NO. PCI-4444PS-UT-1M-S2
SCALE N/A	UNIT mm			SIZE A4 REV. X1
SHEET 2 OF 2				