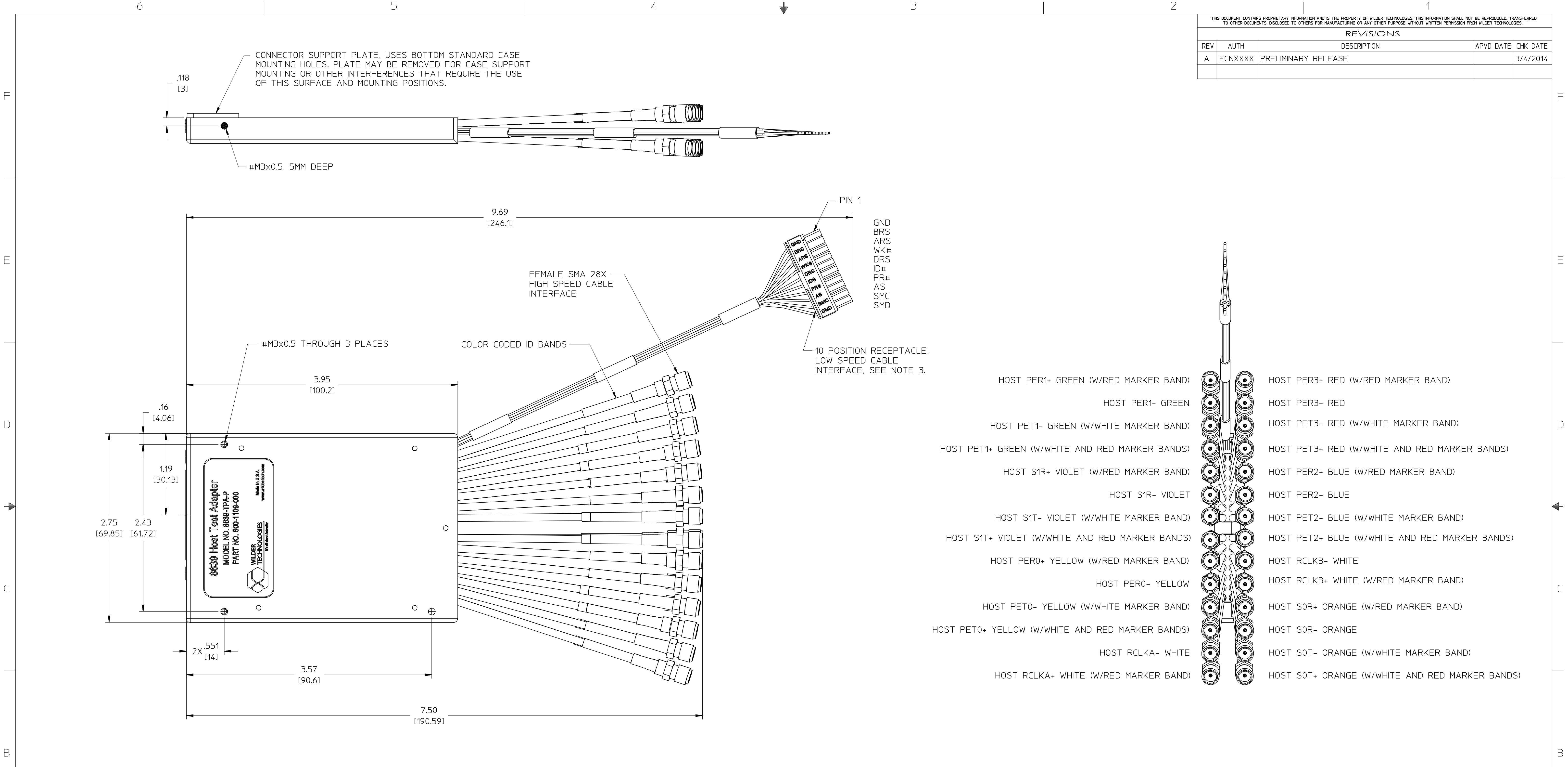


THIS DOCUMENT CONTAINS PROPRIETARY INFORMATION AND IS THE PROPERTY OF WILDER TECHNOLOGIES. THIS INFORMATION SHALL NOT BE REPRODUCED, TRANSFERRED TO OTHER DOCUMENTS, DISCLOSED TO OTHERS FOR MANUFACTURING OR ANY OTHER PURPOSE WITHOUT WRITTEN PERMISSION FROM WILDER TECHNOLOGIES.

REVISIONS				
REV	AUTH	DESCRIPTION	APVD DATE	CHK DATE
A	ECNXXXX	PRELIMINARY RELEASE		3/4/2014



- INTERPRET DIMENSIONS AND TOLERANCES PER ANSI Y14.5.
 - COLOR CODING BANDS ON CABLES, RED BAND DENOTES POSITIVE BLACK (NO BAND) DENOTES NEGATIVE. SMALL WHITE BANDS DENOTE TRANSMIT SIGNALS.
 - A CABLE INTERFACE PLUG CONNECTOR AND CONTACTS FOR THE LOW SPEED CABLE IS PROVIDED WITH THIS ASSEMBLY. MOLEX PART NUMBER 43640-1001 AND CONTACTS 43031-0011 FOR 26-30 AWG WIRE. FURTHER REPLACEMENT CAN BE PURCHASED THROUGH MOLEX DISTRIBUTORS.
 - REFER TO THE USERS MANUAL FOR DETAILED MECHANICAL AND ELECTRICAL SPECIFICATIONS.
- NOTE: UNLESS OTHERWISE SPECIFIED

UNLESS OTHERWISE SPECIFIED DIMENSIONS ARE IN INCHES (METRIC)		WILDER TECHNOLOGIES		6101A East 18th St. Vancouver, WA 98661	
XXX	+ .005	- .005	+ .012	Tel: 360-859-3011 Fax: 360-859-3105 www.wildertech.com	
XX	+ .01	- .01	+ .025	DRAWN BY: W. STANLEY DATE: 3/4/2014	
X	+ .12	- .12	+ .3	CHECKED BY: DATE:	
ANGLE	+ 1°	- 1°		APPROVED BY: DATE:	
MATERIAL:	DESCRIPTION: ASSEMBLY 8639 HOST TEST ADAPTER (PLUG)				
FINISH:	SIZE	PART NUMBER:	REV		
	D	600-1109-000	A		
SCALE: 1:1		DO NOT SCALE DRAWING		SHEET 1 OF 3	