



OVERVIEW

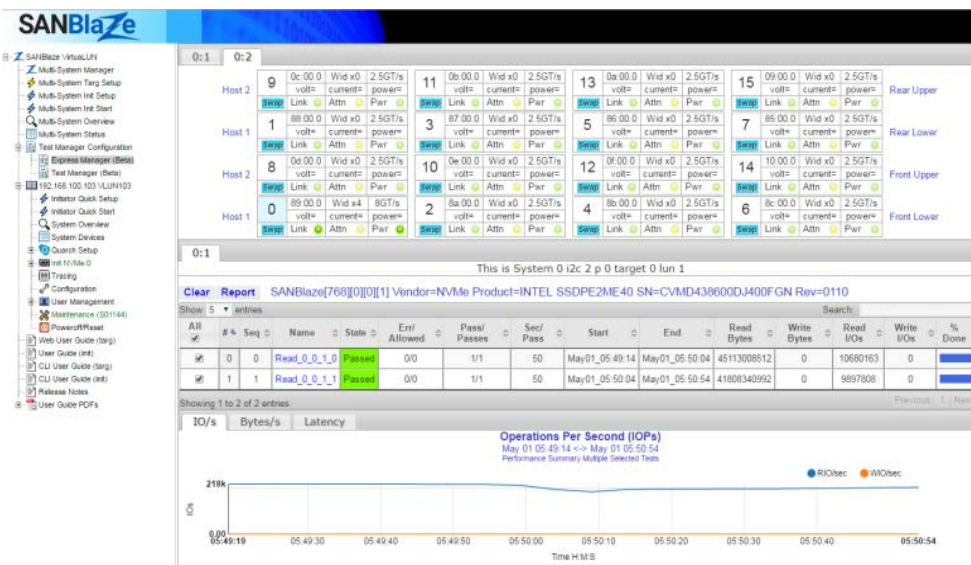
The SANBlaze SBExpress is a complete turnkey NVMe 2.5" SSD validation test system. The SBExpress feature set provides unique functions applicable to all aspects of a product lifecycle, from development to design validation to test and QA. The ability to drive NVMe SSDs with a wide range of configurable attributes provides engineers with a flexible, multi-controller supported validation test platform. Development, qualification, and certification test cycles can be highly automated, thus reducing overall test time, and rapidly surfacing errors and non-conformance.

GENERAL FEATURES

- High bandwidth NVMe 1.2 testing (24GB/sec)
- Full hot-plug support
- Voltage margining
- Power monitoring at each drive
- Automated stress testing for validation
- Software integration for automation test environments REST/XML API and CLI test infrastructure
- Performance over time, power over time
- Latency testing
- UNH conformance test support for 7.0
- Dual and Single Port SSD support
- m.2 SSD adapter available
- I2C connection to Management Interface (MI)

KEY APPLICATIONS

- Quarch™ integration, which allows signal "glitching," hot plug/surprise removal
- Simultaneous signal integrity test control with data verification
- Extensive NVMe command control including firmware download, format, namespace management, T10 DIF
- Generic IO for all NVMe low level and custom commands
- Performance testing
- Error handling
- Multi-port failover testing
- Full validation test capability beyond "UNH conformance" with a fully customizable solution to match "end to end" departmental test requirements from engineering development to validation to QA to manufacturing floor



Automated Test Manager

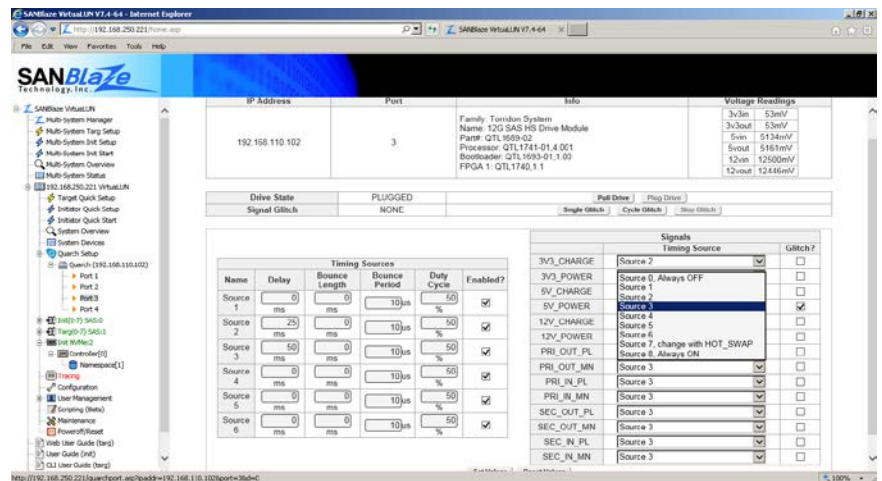
SBEXPRESS VIRTUALUN NVME SOFTWARE

The VLUN NVMe software provides full control and programmability of parameters, providing unique storage test conditions for NVMe drive testing, development and conformance testing.

VLUN software includes:

- Test coverage for all aspects of the 1.2 Version NVMe specification
- UNH Conformance Test Suite 7.0 with Dual Port drive support
- SGL, SR-IOV, full namespace control and reservations
- Drive multiple ports of traffic simultaneously
- Send specific or custom op codes in an easy to use scriptable format
- Read/write/compare testing
- Error injection
- Custom command builder
- Drive and test single or multiple NVMe target devices

SBExpress hardware also features full power margining under software control and continuous Voltage, Current and Power measurement at each device while testing. Adding an optional Quarch™ riser enables signal glitching on all PCIe signals, and Quarch integration into SANBlaze VLUN software allows glitching, PCIe lane failure and drive controlled/surprise removal operations to occur while testing.



Quarch PCIe Glitch Integration

NVME TEST PLATFORM FEATURES

- Supports 4-lane (Single) and 2x2-lane (Dual) PCIe devices.
- Supports a total of 8 DUT's dual path or 16 DUT's single path
- Internal power source - 110V/240V AC, 50-60Hz, 8.5A.
- NVMe connector savers (interposer boards)
- Hot swappable devices under test
- Status and power indicators
- Power margining
- Power measurements and insertion count

ORDERING INFORMATION

Part Number	Description
SB-Express-VLF	Performance optimized
SB-Express-SLF	Ideal for benchtop testing
SB-Express-DT	Benchtop testing using customer's host

For more information, email sales@serialcables.com or call (303) 495-2320

Serial Cables, LLC • 8811 American Way, Ste110 • Englewood, CO 80112 • Tel: (303) 495-2320 • www.serialcables.com